



Inspiring Innovation and Discovery

---

# User Manual

for

# Automated Banking Machine

Version <1.0>

Prepared by

Group Name: 110

Byron Sinclair  
Jacob Alexander  
Manmeet Singh

**Instructor:** Dr. K. Sartipi

**Course:** SFWR ENG 3K04

**Lab Section:** *L01*

**Teaching Assistant:** *SH*

**Date:** 22/09/09

# Contents

<b>CONTENTS .....</b>	<b>II</b>
<b>REVISIONS .....</b>	<b>III</b>
<b>1 OVERVIEW .....</b>	<b>1</b>
1.1 PURPOSE .....	1
1.2 HOW TO USE THIS DOCUMENT .....	1
1.3 ASSUMPTIONS .....	1
<b>2 BANK CLIENT USER INTERFACE .....</b>	<b>2</b>
2.1 LOGGING IN .....	2
2.2 MAKING A DEPOSIT .....	4
2.3 MAKING A WITHDRAWAL .....	5
2.4 TRANSFERRING MONEY BETWEEN ACCOUNTS .....	6
2.5 DISPLAYING THE BALANCE OF AN ACCOUNT .....	6
2.6 LOGGING OUT .....	6
<b>3 BANK EMPLOYEE USER INTERFACE .....</b>	<b>7</b>
3.1 RESTOCKING THE SAFE .....	7
3.2 SHUTTING DOWN .....	7

## Revisions

Version	Primary Author(s)	Description of Version	Date Completed
1.0	Byron Sinclair Jacob Alexander Manmeet Singh	Complete guide to the MacBank Automated Banking Machine for both bank client's and employees.	23/11/09

# 1 Overview

## 1.1 Purpose

This document provides the operational manual for the MacBank Automated Banking Machine.

## 1.2 How to Use this Document

The information in this user guide, as outlined in the Table of Contents, is divided into sections corresponding to the two different types of users of the system.

The system is either used by:

1. A bank client, who logs in with a swipe card and a PIN. A properly authorized client may perform various monetary transactions with their accounts.
2. A bank employee, who logs in with a one of two keys. One key is used to shut the system down, while the other is used to activate the restocking interface.

## 1.3 Assumptions

This document makes no assumptions about the users of the system and requires no prior knowledge on their part.

## 2 Bank Client User Interface

The main frame of the ABM is shown below.

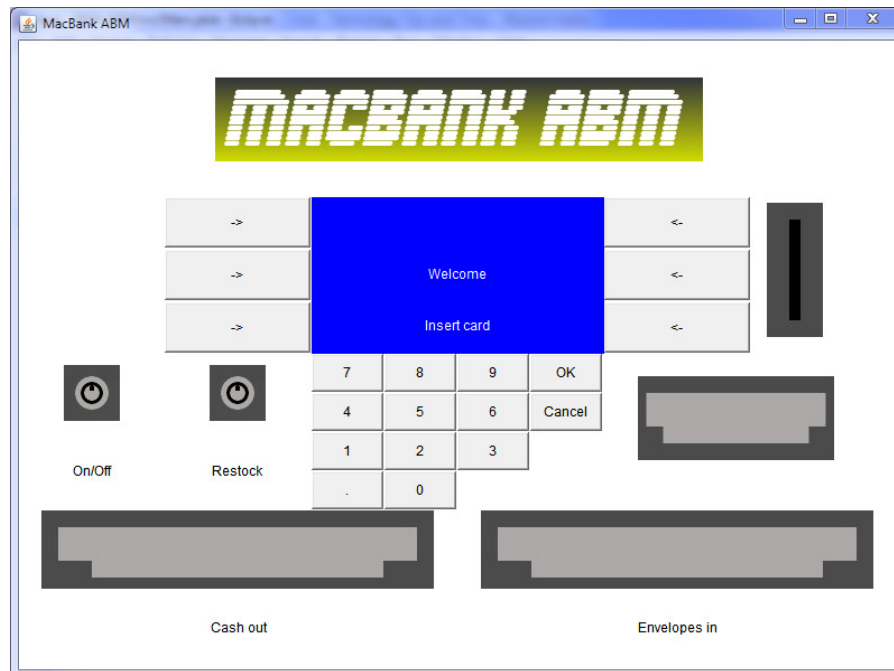


Figure 2.1 Main Frame of ABM

### 2.1 Logging In

To begin, a user can log in by inserting their card (by clicking on the slot to the right of the screen). This will prompt the user for their card number, as seen below.

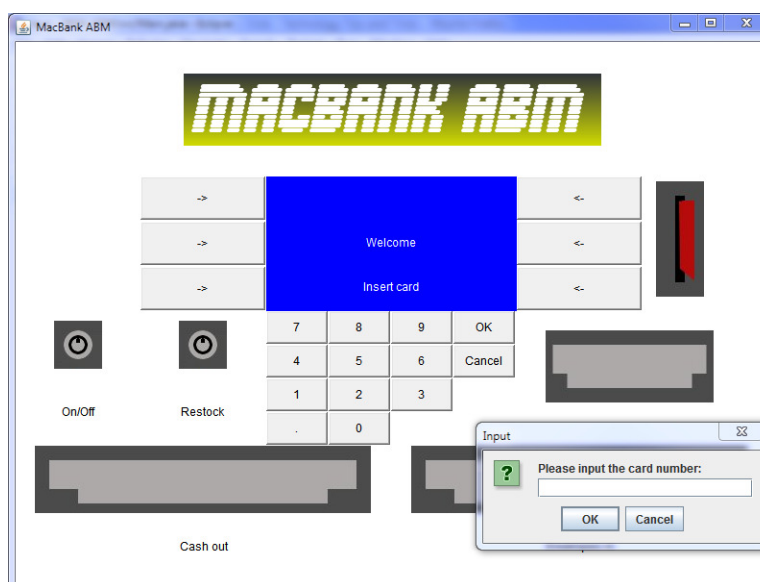


Figure 2.2 Card Number Input

After a card number has been entered, the user's PIN is requested. The user will only be able to proceed once 4 digits have been entered using the ABM's keypad. The PIN number is kept confidential by replacing the user's input with "\*"s.

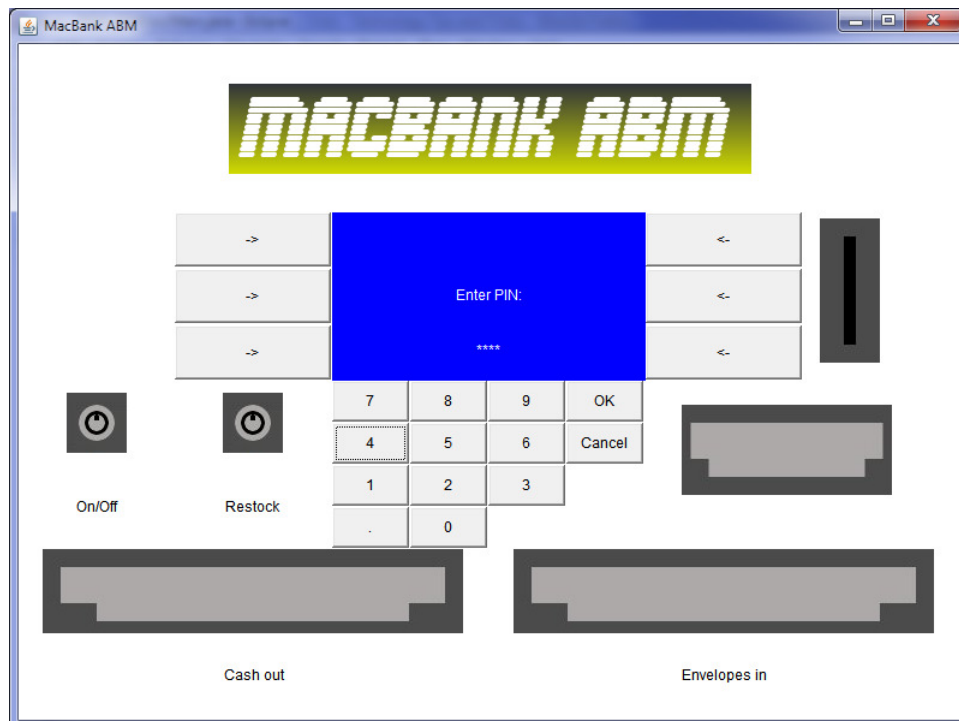


Figure 2.3 PIN Input

If the card number is valid and the PIN corresponds to the card number, the system proceeds to the main menu for bank clients.

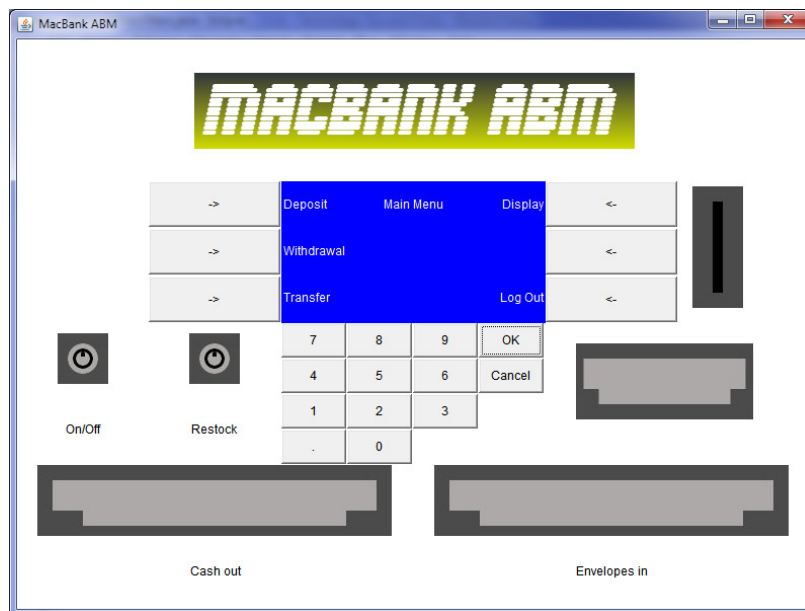


Figure 2.4 Bank Client Main Menu

## 2.2 Making a Deposit

From the main menu, the user can make a deposit by first selecting the “Deposit” option using the buttons to the side of the screen. This will bring the user to a screen in which the account to deposit the money is selected.

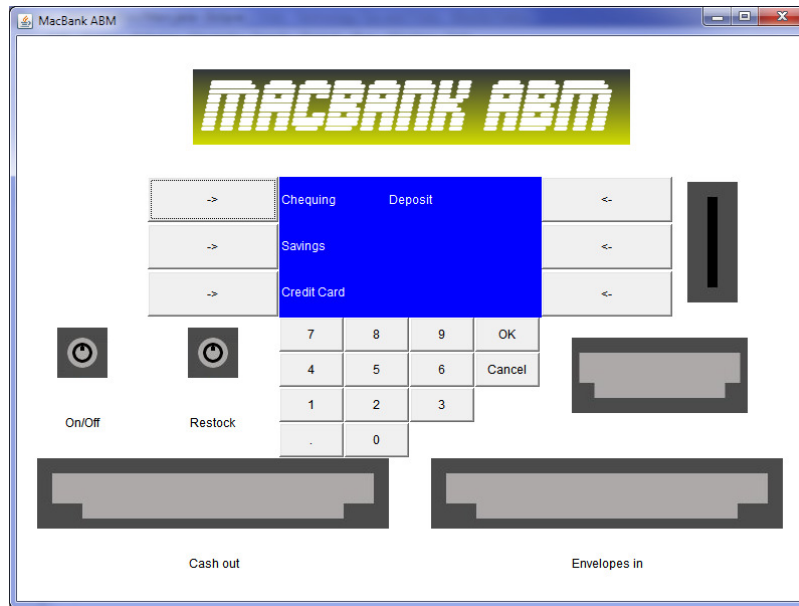


Figure 2.5 Select Account Screen

Once again, the buttons to the side of the screen are used to make a selection. At this point the cancel button can also be used to return to the main menu. If an account is selected, the system proceeds to request a deposit amount from the user. This amount is input using the keypad and when the user is ready the “OK” button is to be pressed.

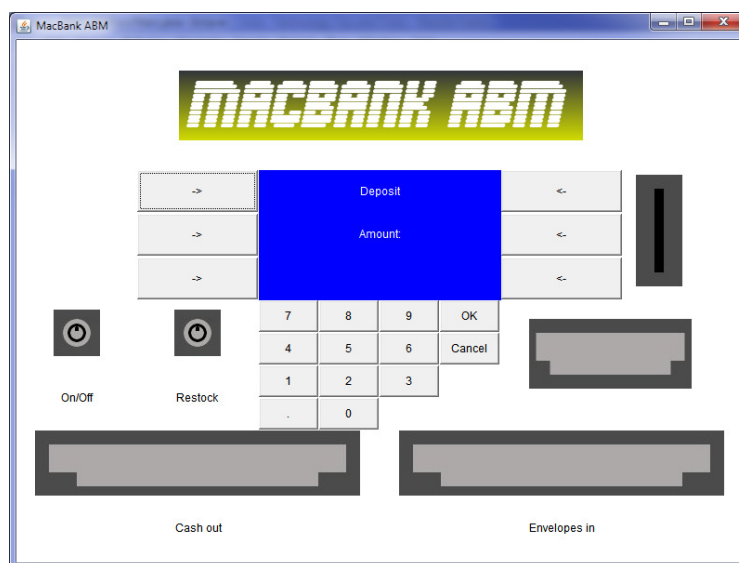


Figure 2.6 Input Deposit Amount

When the transaction is complete, the user is returned to the main menu. If an error occurred during the transaction the user is notified before returning to the main menu. If the transaction is successful, the users deposit envelope is inserted into the ABM while returning to the main menu.

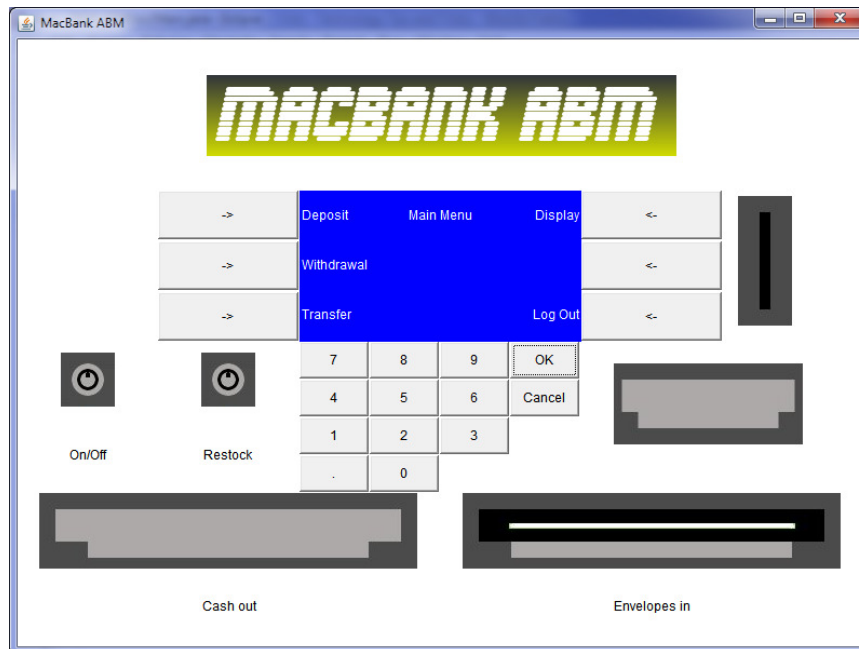


Figure 2.7 Deposit Envelope Insertion

## 2.3 Making a Withdrawal

A withdrawal is performed in the same way as a deposit, but upon successful transaction completion the ABM dispenses the requested cash instead of taking in a deposit.

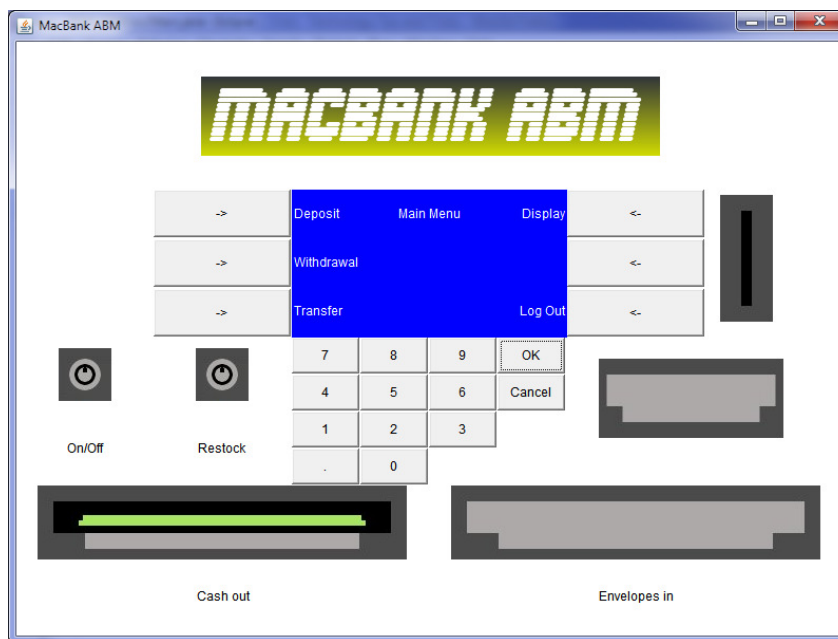


Figure 2.8 Cash Dispensing



## 2.4 Transferring Money Between Accounts

Transferring money is very similar to both the deposit and withdrawal transactions, except that the user is first prompted for the account to transfer from and then the account to transfer to before moving on to the amount to transfer.

## 2.5 Displaying the Balance of an Account

Displaying an account balance is also similar to making a deposit, except that the user is only prompted to select an account, after which the account balance is displayed on the screen.

## 2.6 Logging Out

The user can log out of the system by selecting the “Log Out” option from the main menu using the side buttons. Upon log out the system returns to its idle screen and a receipt is printed while the user’s card is returned to them.

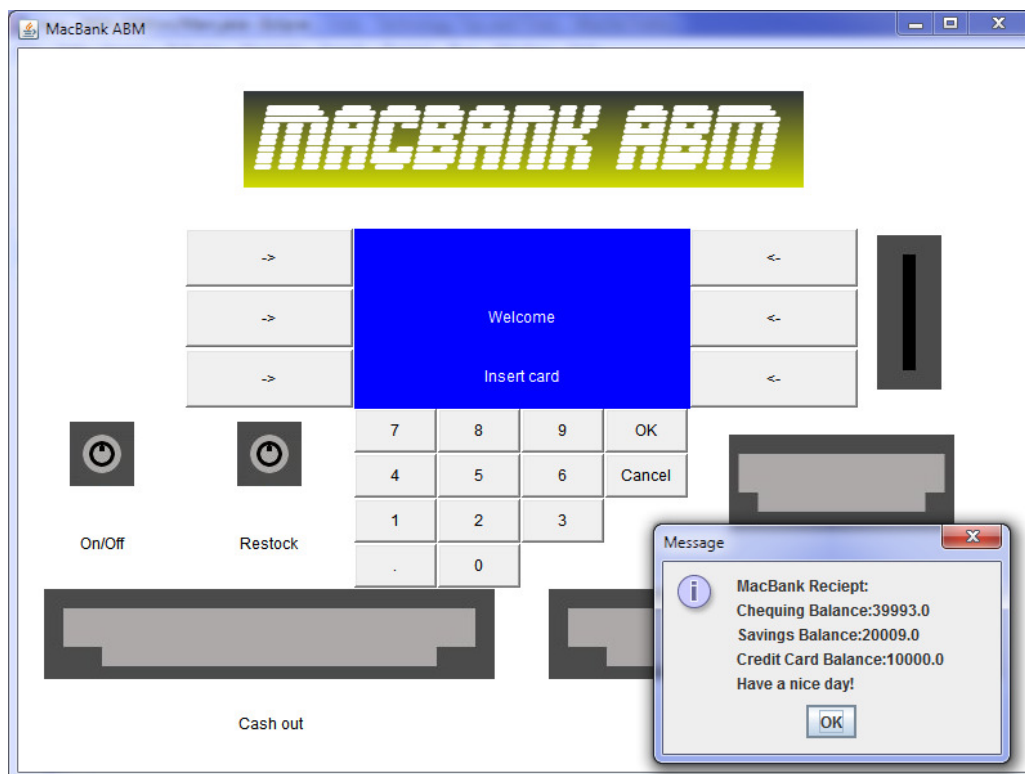


Figure 2.9 User Log Out

## 3 Bank Employee User Interface

### 3.1 Restocking the Safe

An authorized bank employee can restock the safe by using the restock key. The restock key can be inserted while a bank client is still logged in, however the restock interface will not appear until the user has logged out. In the restock interface, the bank employee is prompted for the new safe amount, which is input using the keypad. The new amount is confirmed using the “OK” button.

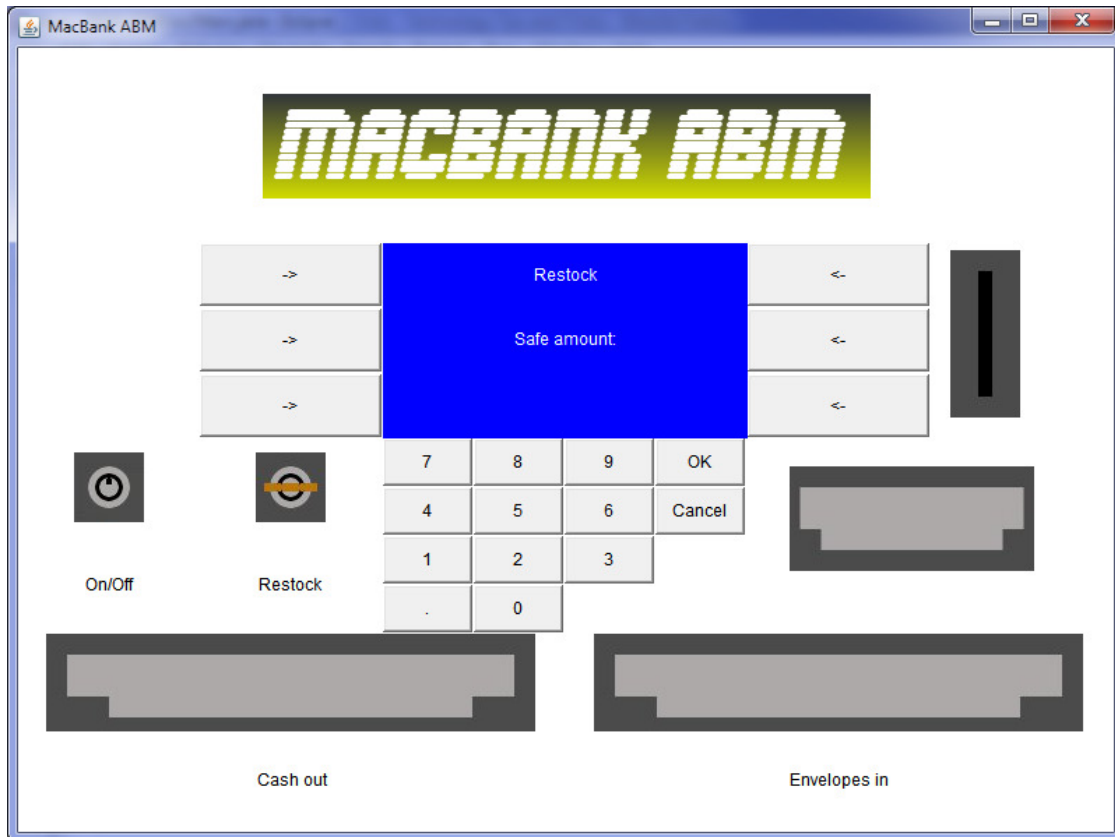


Figure 3.1 Restock Interface

### 3.2 Shutting Down

A bank employee can shutdown the system using the on/off key. This can only be done when the system is in its idle state.